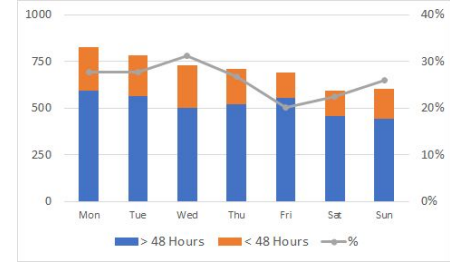


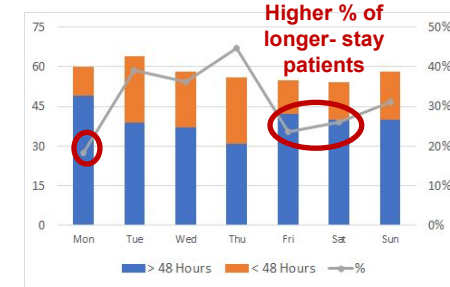
Reducing short-stay admissions and improving bed availability at Lahey Hospital & Medical Center

- The day of the week and time of the day can determine:
 - Whether a patient gets admitted to the hospital
 - The length of stay at the hospital
- Factors affecting admission and length of stay:
 - Who is in charge – conservative admissions
 - Lack of testing on weekends
 - Inpatient vs. outpatient scheduling for MRI

All Admissions by Weekday



CARDIOLOGY - Admissions by Weekday



NEUROLOGY - Admissions by Weekday

